



# **Sales Order Processing Import**

**for Microsoft Dynamics GP 9, 10 & 2010**

## **Install and User Guide**

**Peter Boniface**



# Contents

<b>Overview .....</b>	<b>3</b>
<b>Setup .....</b>	<b>3</b>
Install .....	3
Setup .....	3
<b>Import Definitions .....</b>	<b>4</b>
Overview .....	4
Import Definitions Maintenance Window .....	5
General Import Options Window .....	6
Customer Import Options Window .....	8
Item Import Options Window .....	8
<b>Import Processing .....</b>	<b>9</b>
Overview .....	9
Import Processing Window .....	9
Processing Description .....	10
Filename Handling .....	11
Defaulting of Field Values .....	11
Stock Handling .....	12
<b>Import Auditing .....</b>	<b>12</b>
Overview .....	12
Audit Enquiry Window .....	13
Audit Report Window .....	13
Audit Cleardown Window .....	14
<b>Appendix A: SOP Import File Format .....</b>	<b>15</b>
Overview .....	15
Text File Line Definitions .....	16
Example Files .....	23
<b>Appendix B: Dynamics GP Menu Entries .....</b>	<b>24</b>
<b>Appendix C: Third Party Integration .....</b>	<b>24</b>
<b>Appendix D: Multi-Company Imports .....</b>	<b>25</b>
<b>Appendix E: SQL Interface Tables .....</b>	<b>25</b>
<b>Appendix F: Document Statistics .....</b>	<b>41</b>
<b>Contact us .....</b>	<b>42</b>

## Overview

Sales Order Processing Import is a Nolan Business Solutions product developed to import Orders, Invoices and Returns into the Microsoft Business Solution Dynamics GP SOP module. Designed for our customers' requirements, it has the following features:

- Different file import formats allow for as few or as many fields as you need.
- Intelligent defaulting of values not supplied in the import files.
- Support for creating and updating of customers, addresses and items.
- Full Multicurrency support.
- Full support for the Euro functionality in Dynamics GP.
- Any Number of import definitions can be set up, each with different import files and import settings.
- Support for immediate imports, imports running at a set interval, and even imports running at scheduled times.
- Audit logs are kept for each import for later viewing and printing.
- Multi-Company support, SOP Documents can be imported into any Company.
- Import directly from SQL Interface tables or from CSV text files.

## Setup

### Install

Before installing SOP Import, please ensure that there are no users logged into Microsoft Business Solutions Dynamics GP as this could adversely affect the installation process.

This process will need to be completed on all workstations on which Dynamics GP is installed. However, if Dynamics GP is run from a network (DYNAMICS.dic is installed in a network location), you only need to install to that location.

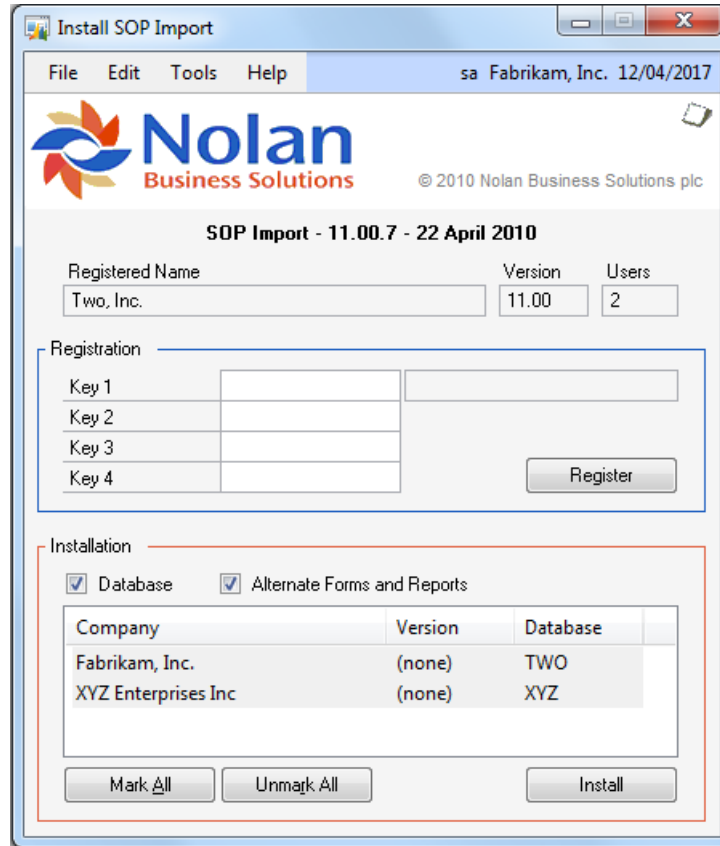
1. Launch the install application.
2. Follow the on-screen instructions to complete the install. The install will confirm the location of Dynamics GP and will install the SOP Import chunk file into this directory.
3. Once the install has completed, run Dynamics GP to load the chunk file.

### Setup

Form security changes, additions to the menu structure, and any necessary file upgrades are not made during the previous application install process. Use the Install window to do these automatically by following the steps below. See Appendix B for information on which forms and menus will be affected.

1. Make sure that no other users are logged into the system.
2. Start Dynamics GP – if you log in using the 'sa' user, the install window will automatically be added to your shortcuts (go to step 7). You **must** login as 'sa' to install when using Dynamics GP on a SQL database.
3. Open the 'Shortcut Bar' and select **Add**. Then select **Other Window**.
4. Enter **SOP Import Install** into the **Name** field and then expand the **Nolan Business Solutions SOP Import** folder in the Available Windows list.
5. Expand the **Company** folder. Then find and select the **Install SOP Import** window in the list and push the **Add** button.
6. Click on the **Done** button to close the Add Shortcut window.

7. Select **SOP Import Install** from the Shortcut Bar. A window showing all the companies will appear, as illustrated below.



8. To register SOP Import, enter your **Registration Keys** in the fields provided (You will have received these Registration Keys with your purchase of SOP Import). This is required to enable use of SOP Import in companies other than the sample company, 'Fabrikam, Inc.'.

**Note:** The registration keys may have a built in expiry date. This information is displayed at the bottom of the window (to the left of the Install button).

9. Click on the **Register Button**, you will receive a message indicating that the Registration was successful.
10. For SQL Installations, make sure the **Database** option is ticked to create the tables on SQL, set permissions to them correctly and install stored procedures.
11. Use the **Mark/Unmark, Mark All** and **Unmark All** buttons to mark all the companies to install SOP Import to. Finally, push the **Install** button.

The system automatically places all SOP Import windows on a new 'SOP Import' sub-menu on the affected Dynamics GP menus, for example Cards, Sales, SOP Import will then list each of the SOP Import setup screens.

## Import Definitions

### Overview

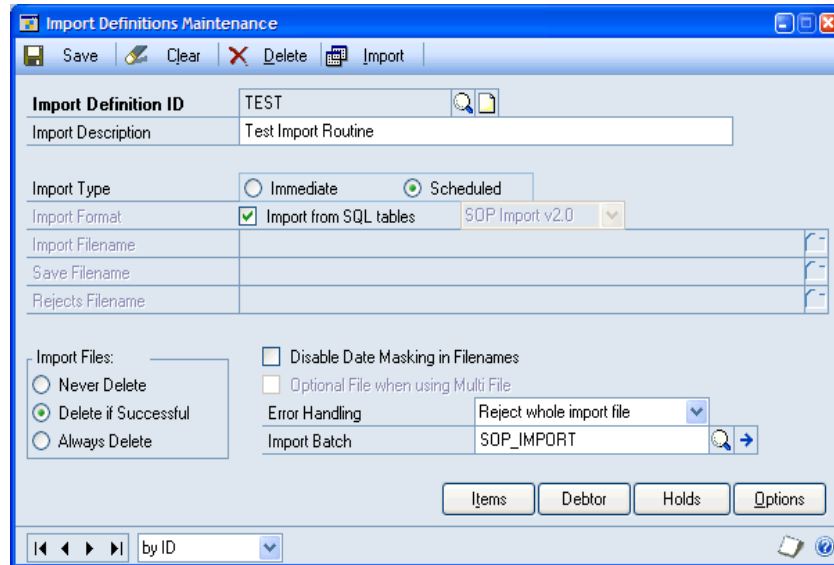
An Import Definition defines all the details which are used for an import. The import files, default batch, timing settings and many other options all need to be set up.

## Import Definitions Maintenance Window

### Location

Cards >> Sales >> SOP Import >> Import Definitions

### Layout



### Processing

The functionality of each of the fields adhere to the standard lookups and zooms within Dynamics GP.

**Import Type** specifies whether this definition is designed to be run immediate, or to be run periodically on a schedule. Immediate imports will always be run as soon as they are started in the SOP Import Processing window. Scheduled imports can be run at either specified times, or on a regular interval of a set number of minutes. See information on the Import Period and Queue Times fields below for more details on timed imports.

**Import Format** indicates whether to import from the SQL Interface tables, or from CSV text files. In the case of text files, the drop-down list defines which of the two HDR formats are used in the import file. A full description of both formats appears in Appendix A.

**Import Filename** specifies the full pathname to the text file to import.

**Save Filename** specifies an optional text file to write successfully imported transactions to.

**Rejects Filename** specifies an optional text file to write rejected transactions to. When a transaction contains an error, it is written to this file.

**Import Files** specifies what will happen to an import file once it has been imported. 'Never Delete' will leave the import file as it is. 'Delete If Successful' will delete the import file if the whole file is imported successfully. 'Always Delete' will mean the import file is always delete, even if errors occurred.

**Disable Date Masking in Filenames** determines if the date placeholders should be processed in filenames. See the Filename Handling section on page 11 for more details.

**Error Handling** specified what will happen when an error is encountered in an import file. When set to 'Reject whole import file', the whole file will be rejected. When set to 'Reject invalid transactions', any transactions which are invalid are rejected, but valid transactions are still imported. All error messages are always recorded in the error file (the import filename with an .ERR extension).

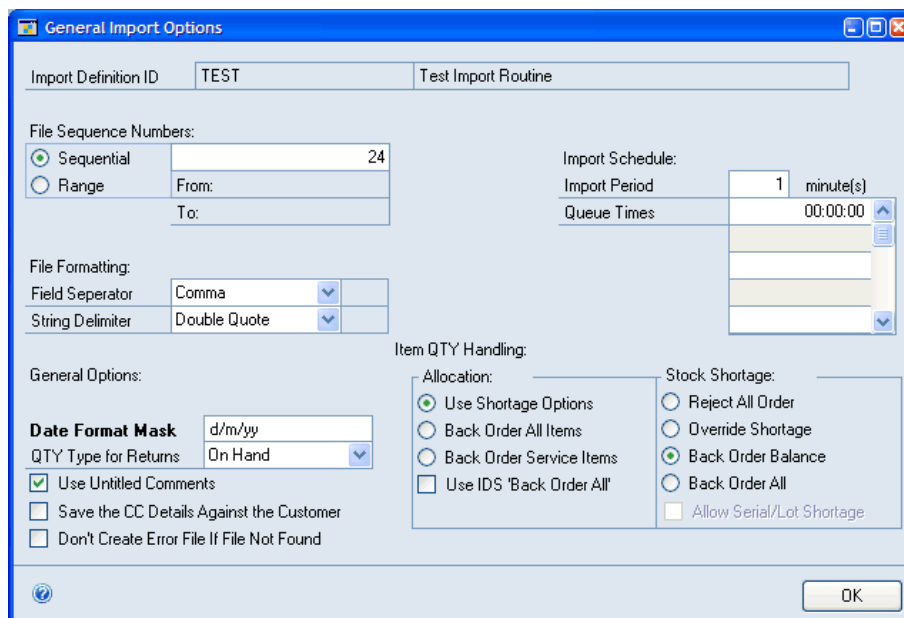
**Import Batch** determines which SOP batch imported sales documents are created in. If the batch does not exist at the time of import, it will be created. If this field is blank, the batch will default to "SOP IMPORT".

## General Import Options Window

### Location

Options button on Import Definitions Maintenance window

### Layout



### Processing

This window contains all the extra options relating to a normal import. Many options also apply to customer and item imports.

**File Sequence Numbers** determine how sequence numbers in file names are handled. If set to Sequential, the sequence number is substituted for the # characters in all filenames and then the number is incremented by one. Alternatively, a range of Sequence Numbers can be specified. If there is range, all files available in the range are imported every time the import is run. See the Filename Handling section on page 11 for more details.

**Import Schedule** specifies when the import will be run for scheduled definitions. *Import Period* specifies the interval between imports when the definition is run as Recurring. *Queue Times* contains a list of the times for the import to run if it is run as Queued.

**File Formatting** defines what characters are used in the import file to separate fields and to delimit field values. Fields can be separated by commas, tabs, or a user entered character. Values can be delimited by single quotes, double quotes, or a user entered character.

**Date Format Mask** Enter the mask, along with any separators, which describes how the date fields appear in the import file.

Here are some of the supported mask components -

DDD - Day number in the year. If no year is contained in the mask, it will be assumed that the year is the same as the year of the Dynamics GP user date.

d - Single digit day format, e.g 1 for the first, but 11 for the eleventh.

dd - Double digit day format, e.g. 01 for the first, 11 for the eleventh.

m - Single digit month format - as single digit day format.

mm - Double digit month format - as double digit day format.

MMM - Month name, e.g. JAN, FEB, MAR, etc.

yy - Double digit year, e.g. 05, 06, etc.

yyyy - Four digit year, e.g. 2005, 2006, etc.

Separators - Almost any character can be used as a separator, apart from those which would be interpreted as date mask characters, however, please ensure that the separators in the date mask are the same as those in that date string in the import file.

Here are some example dates and how their format would be represented

Date on file	Format Option
21/04/99	dd/mm/yy
04/21/99	mm/dd/yy
042199	mmddy
21/04/1999	dd/mm/yyyy
045/99	DDD/yy ( day 45 of year 99)
123/1999	DDD/yyyy ( day 123 of year 1999 )
21JAN1999	ddMMMyyyy
21/FEB/99	dd/MMM/yy

Dates with single digit day / month formats, e.g. dmyy, MUST contain a separator in the date, and thus also the date mask to allow the date decode routine to differentiate between the day and the month. For example, with a date of 11106 with a mask of dmyy, we do not know whether this is the 11th January 2006, or the 1st November 2006, so it is necessary to include separators in the date string in the import file, e.g. 1-11-06, and the date mask will then be d-m-yy.

**N.B.** This field must be populated when using text import files. If it isn't you will receive the error message - 'You Must Set Up A Date Format Mask On The General Import Options Definition Window Before You Can Run This Import' - when attempting to run an import. Sites which have upgraded from an earlier SOP Import release which had a different way of defining the date format may well receive this error if they haven't updated their format definitions before attempting an import.

**QTY Type for Returns** allows the default quantity type for returned items to be selected. This is only used if a RTN line is not found in the Return sales document.



**Use Untitled Comments** determines how comments on sales documents are handled. If ticked, comments imported will use a Comment ID of '\*untitled'. If not ticked, a new Comment ID will be created for the comments for each transaction, using the SOP Number of the document as the Comment ID.

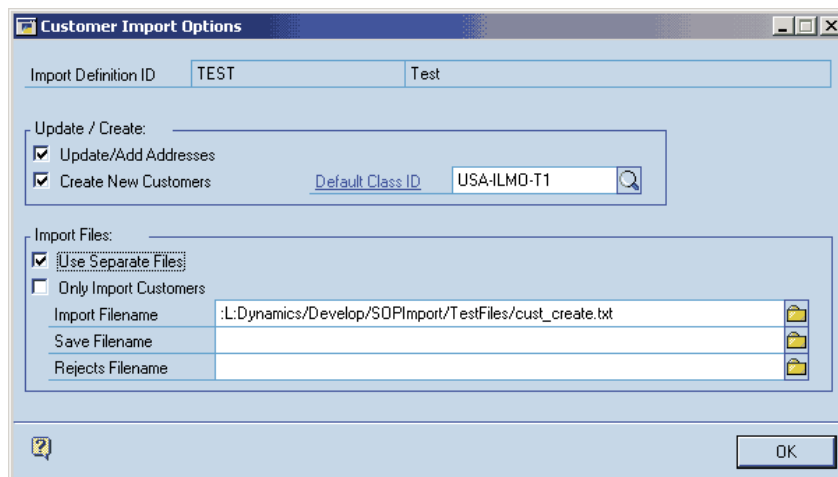
The Stock Shortage Options lists the available settings for when an imported item is not in stock. Reject All Order will reject the whole transaction, Override Shortage will import the item as normal leaving negative stock in the inventory, and Back Order Balance and Back Order All will place the required quantities on back order, if the item setup allows back ordering.

## Customer Import Options Window

### Location

Customer button on Import Definitions Maintenance window

### Layout



### Processing

**Update/Add Addresses** determines how addresses are handled in the import. If ticked, address which do not exist in Dynamics GP are created using information from the import file. Also, addresses which do exist are updated with the values from the import file.

**Create New Customers** determines if non-existent customers should be created.

**Default Class ID** specifies the default class to use when creating new customers. The Customer Class ID field on ADR records overrides this.

**Use Separate Files** determines if a separate set of file should be used before the main transaction import. The files are specified by the Filename fields on this window. The import file should only contain ADR records.

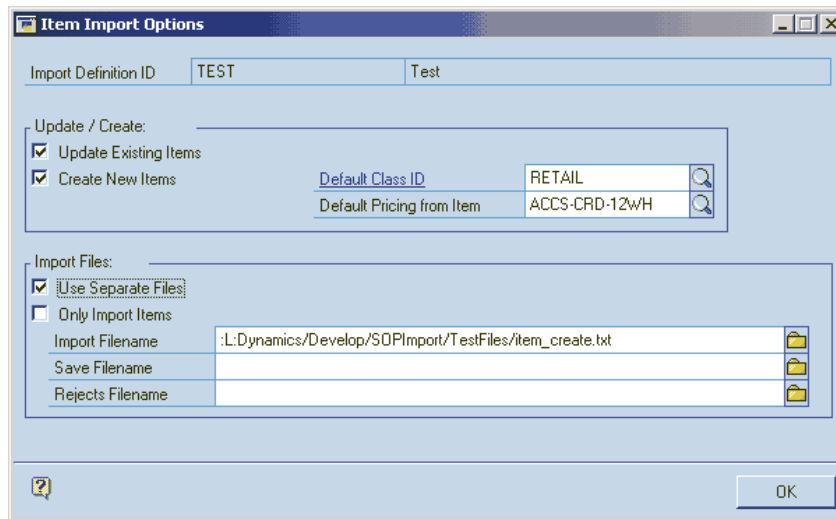
**Only Import Customers** specifies that this Import Definition ID should only be created and/or updating customers and addresses. If ticked, only the import file given on this window is imported.

## Item Import Options Window

### Location

Item button on Import Definitions Maintenance window

## Layout



## Processing

This window specifies options that deal with items.

**Update Existing Items** determines how items are handled in the import. If ticked, existing items are updated with the values from the import file.

**Create New Items** determines if non-existent items should be created.

**Default Class ID** specifies the default class to use when creating new items. The Item Class ID field on DTL records overrides this.

**Use Separate Files** determines if a separate set of file should be used before the main transaction import. The files are specified by the Filename fields on this window. The import file should only contain DTL records.

**Only Import Items** specifies that this Import Definition ID should only be create and/or updating items. If ticked, only the import file given on this window is imported.

## Import Processing

### Overview

The Import Processing window uses a specified Import Definition ID to import orders, invoices and returns into the Dynamics GP Sales Order Processing module.

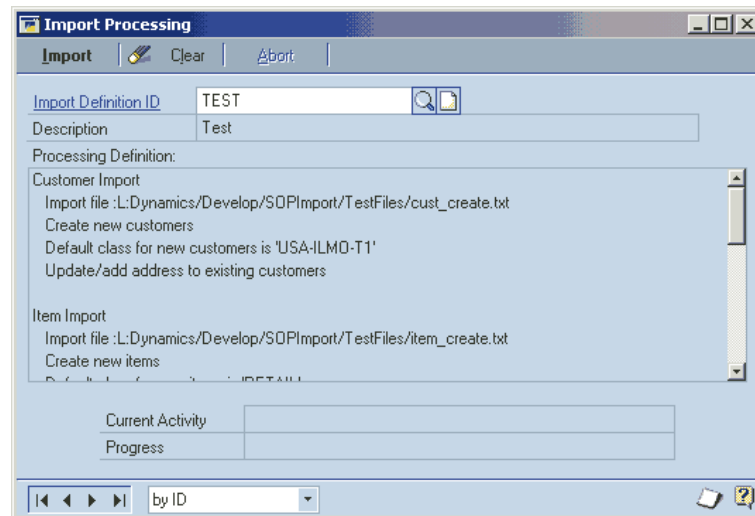
### Import Processing Window

#### Location

Tools >> Routines >> Sales >> SOP Import >> Import Processing

(Also from Import button on Import Definitions Maintenance window.)

## Layout



## Processing

When an Import Definition is selected, the Processing Definition list is filled with the import options. This shows all information on what this import definition will do.

The Current Activity and Progress fields update during the import to show its progress.

### Processing Description

An import process can be in up to three stages. If 'Use Separate Files' is on for either Customer or Item imports, these files are validated and imported first. Once these are complete, the main transaction file is read.

Import processing reads through the transaction import file and validates the Orders, Invoices and Returns it contains. If Error Handling is set to 'Reject invalid transactions', any transactions which pass validation are imported. If Error Handling is set to 'Reject whole import file', any error causes the whole file to be rejected.

By default, imported transactions are all placed in the batch specified in the Import Definition. This batch number can be overridden using the Batch Number field on the transaction header.

Once imported, the transactions are complete documents, just as they would be if they had been entered through Sales Transaction Entry. They can be posted, transferred, etc. just like a normal transaction.

Tax details will be created for the transactions according to the information in the import file. If no details are supplied, tax information is defaulted using information from the customer. Please note that Dynamics GP regularly recalculates all the tax information, so the imported tax details may be lost if a document is changed after import.

Once an Immediate import is complete, a window will be displayed showing any errors. These errors are also written to the import error file (the import file with an .ERR extension). This allows you to see the errors even when running a scheduled import, which will not display the errors window.

An audit is also kept of the imports. It records information such as the import file names, date, time and user. See the Import Audit section on page 12 for more details on viewing this audit information.

## Filename Handling

### Sequence Numbers

When running a scheduled import, it may be required that a different file is imported every time the import is run. Where these files will contain a sequential numeric, the places in the filename occupied by the sequential number may be substituted with # characters. For example:

An import filename of :C:Files/Inv####.csv will become :C:Files/Inv0001.csv on the first import, :C:Files/Inv0002.csv on the second import, and so on.

The number used for # replacement is defined in the File Sequence Numbers section of the import definition options. If this option is set to Sequential, a single file is imported each time the import runs and the sequence number is then incremented by one.

If File Sequence Numbers is set to Range, 'From' and 'To' sequence numbers are specified. When the import runs, all files in this range are imported. Files which do not exist are ignored. For example:

From is set to 1 and To is set to 3. The import filename is :C:Files/Inv####.csv. Every time the import runs, it will attempt to import files :C:Files/Inv0001.csv, :C:Files/Inv0002.csv and :C:Files/Inv0003.csv.

### Dates

When dates are used in the file names, the placeholders **dd** and **mm** can be used. These are replaced with the current day and month. E.g.

An import filename of :C:Files/Invddmm.csv will become :C:Files/Inv3003.csv when imported on the 30<sup>th</sup> March.

As filenames could contain dd or mm without wanting to have these replaced, the date replacement feature can be disabled using the Disable Date Masking option in the import definition.

## Defaulting of Field Values

A sales document contains many more fields than are supplied in the import file definition. Additionally, many fields in the import file can be left blank. This section details where the values for all these fields are defaulted from.

If not supplied, the SOP Document ID is defaulted from the Sales Order Processing Setup window. This affects whether users are allowed to delete or void the transactions, which invoice type orders will raise when transferred to invoice, etc.

If an SOP Number is not given, it defaults to the next available document number for the Document ID of this transaction.

Customer related details, such as addresses, tax schedules, and shipping methods, are all defaulted from the Customer card. For invoices and returns, the customer related nominal accounts used when creating distributions are also defaulted from the Customer card.

Stock is, by default, allocated and fulfilled from the site specified in the Sales Order Processing setup window. See the Stock Handling section below for details on handling of stock levels and serial/lot number tracking.

The customer's Trade Discount percentage will default from the Customer card. It is then used to calculate a Trade Discount Amount based on the document's Subtotal value.

Item related details, such as unit cost, description, and tax schedule, are defaulted from the Inventory Item card. The Item related nominal accounts are also defaulted from the Inventory Item card. If no item price is supplied in the import file (the field contains nothing at all), the items will use their default price for this customer using the full Dynamics GP pricing mechanism. If you wish to have an item with zero price, you must specify 0 in the import file.

SOP Import will make use of multicurrency pricing when defaulting an item price. For versions of Dynamics GP prior to 6, this requires Nolan Business Solutions' Advanced SOP to be installed with Multicurrency Item Pricing being used. For Dynamics GP 6 and greater, the standard Inventory module supports multicurrency item pricing.

## Stock Handling

When an item line is created, stock is allocated from the Site ID assigned to the line. If the Document ID for this transaction is not set to 'Use Separate Fulfilment Process', item lines are also fulfilled.

If serial or lot number tracking is enabled for the item, serial and lot numbers are automatically allocated. Note that for Returns, serial and lot numbers are not automatically allocated.

If you don't want serial and lot numbers to be assigned automatically, Serial/Lot (SLN) lines can be used in the import file to specify exact serial or lot numbers to use. If there are insufficient numbers given to cover the line's quantity, an error will be raised. If there are too many numbers given, any excess is ignored. Note that the serial or lot number must already exist in Dynamics GP before using them in a Serial/Lot line.

For Kit items, all components are individually allocated, and their serial or lot numbers allocated as required, just as for a normal item line.

If the import file includes component details (COM lines), these will be added as components on the kit. If the kit item already has default components setup in inventory, component details are not required in the import file.

If there is insufficient stock in the warehouse to fully allocate an item, or insufficient serial or lot numbers, whether for standard items or kit items, the 'Stock Shortage' option is used to determine what to do. Any stock shortages will be reported in the error messages window at the end of the import processing.

If any one item line is rejected from a transaction during import, the entire transaction will then be deleted, and any allocated stock and serial/lot numbers will be released.

Note that all stock handling happens after validation of the import file, so if a transaction is rejected at this stage, the rest of the transactions will continue to be imported. Error Handling of 'Reject whole import file' has no effect once validation is complete.

## Import Auditing

### Overview

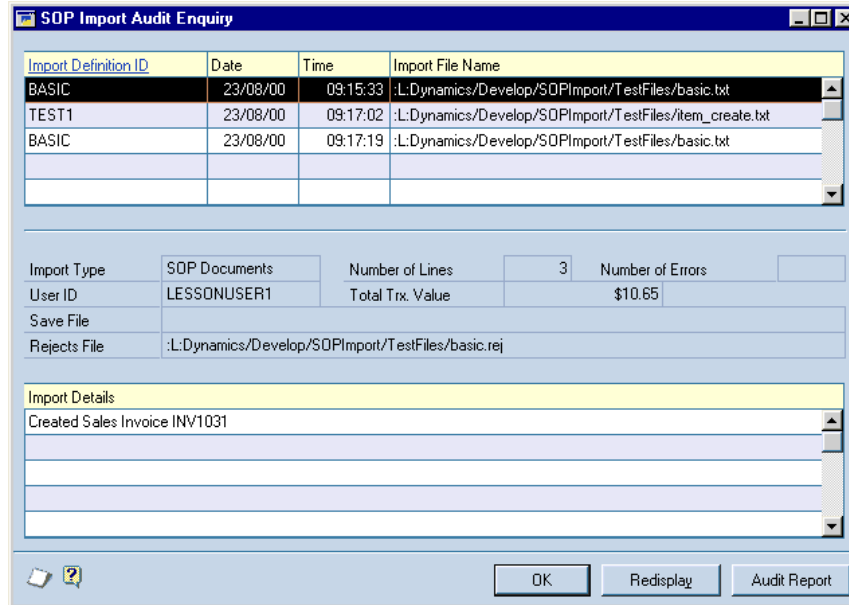
Three windows are available for auditing the SOP Import. These are the Audit Enquiry, Audit Report and Audit Cleardown windows. These provide information for every import, detailing the files imported, the number of errors, and which items, customers and documents were created or updated.

## Audit Enquiry Window

### Location

Enquiry >> Sales >> SOP Import >> Import Audit Enquiry

### Layout



Import Definition ID	Date	Time	Import File Name
BASIC	23/08/00	09:15:33	:L:Dynamics/Develop/SOPImport/TestFiles/basic.txt
TEST1	23/08/00	09:17:02	:L:Dynamics/Develop/SOPImport/TestFiles/item_create.txt
BASIC	23/08/00	09:17:19	:L:Dynamics/Develop/SOPImport/TestFiles/basic.txt

Import Type: SOP Documents    Number of Lines: 3    Number of Errors:   
 User ID: LESSONUSER1    Total Trx. Value: \$10.65  
 Save File:   
 Rejects File: :L:Dynamics/Develop/SOPImport/TestFiles/basic.rej

**Import Details**  
 Created Sales Invoice INV1031

OK    Redisplay    Audit Report

### Processing

The enquiry window shows a complete list of all entries in the Import Audit file, showing the Definition ID used, date and time of import, import, save and reject file names, number of lines in the import file, number of errors found and the total value of the imported transactions.

Selecting an import audit line also displays the details for the import. This shows if a document has been created, an item has been created or updated, a customer has been created, and an address has been created or updated.

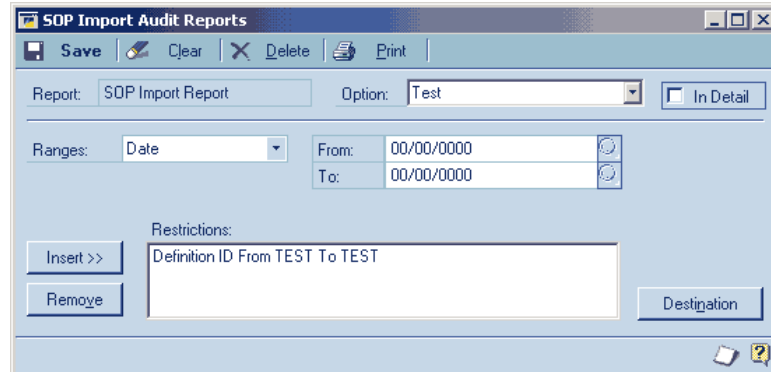
The Audit Report button provides a quick way of getting to the Audit Report window.

## Audit Report Window

### Location

Reports >> Sales >> SOP Import >> Import Audit Report

## Layout



## Processing

The Audit Report window allows an audit report to be produced using restrictions to limit the output. Various options may be setup and saved.

The 'In Detail' specifies whether import details are printed on the report. Import details are show in the bottom window of the Audit Enquiry window.

The ranges available are Import Definition ID, Date and User ID. Use the From and To fields to enter the range required and then Insert it in to the Restrictions list. Use the Remove button to remove a restriction from the list.

The Destination button is used to specify where to print the report to. Destinations available include the screen, the printer or to a file. Any combination of these can be chosen.

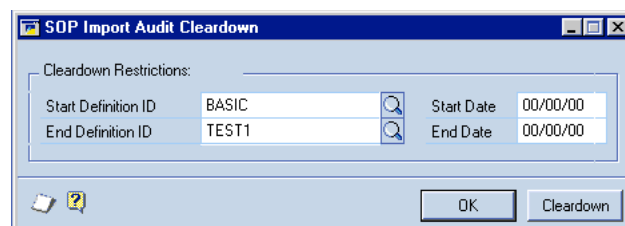
The Delete button is used to delete unwanted report Options.

## Audit Cleardown Window

### Location

Tools >> Routines >> Sales >> SOP Import >> Import Audit Cleardown

## Layout



## Processing

The cleardown window allows for the removal of entries in the Import Audit file. A range on the Import Definition ID and the Date of import can be specified. Only entries within these ranges will be cleared.

The Start and End Definition ID must be valid definitions. The lookup buttons will open the standard lookup displaying all existing Definition IDs.

The Cleardown button initiates the cleardown process with whatever ranges are specified on the window.

## Appendix A: SOP Import File Format

### Overview

The import file consists of comma-separated text lines organised in the following order:

CMP	Company to import to. Must be the first line of the file.
HDR	Document header in either Version 1.x or 2.0 format.
ADR	Address - supports more address information.
CMT	Comment - supports long comments for the document.
DTL	Item detail - may be several per header.
CMT	Comment - comment details for the item.
TAX	Tax details for the Item. May be several.
NOM	Nominal Account Overrides for Item. May be several.
SLN	Serial/Lot number details for Item. May be several.
COM	Item component detail. Optional. May be several per item.
NOM	Nominal Accounts for Component. May be several.
SLN	Serial/Lot number details for Component. May be several.
RTN	Return QTY- Returns Only. Optional return Amounts.
CMS	Commissions detail – may be several per document.
TAX	Tax details - may be several per document.
NOM	Nominal Accounts for the document. May be several.
PAY	Payment/Deposit Details for the document.
TRA	The documents tracking numbers.

Blank lines or lines beginning with a full stop ( '.' ), a semicolon ( ';' ) or a hash ( '#' ) are ignored by the import.

Depending on the Import Definition's Date Format, all dates should be in one of the following formats:

DD-MM-YY Format: `ddmmyy`, `ddmmyyyy`, or `dd/mm/yyyy`

MM-DD-YY Format: `mmddy`, `mmddyyyy`, or `mm/dd/yyyy`

Note that `dd/mm/yy` and `mm/dd/yy` are not supported date formats.

When a year is given in two digits, the year is assumed to be in the range 1936 to 2035.

## Text File Line Definitions

### File Header

Field	Name	Size	Comment
1	Record Type	3	CMP
2	Database/Directory	5	Database Name for SQL. See Appendix D

### Header - Version 1.x

Field	Name	Size	Comment
1	Record Type	3	HDR
2	Customer Number	15	
3	Document Number	15	
4	Document Date	Date	
5	Customer Reference	60	
6	Comment 1	30	
7	Comment 2	30	
8	Address 1	30	
9	Address 2	30	
10	Address 3	30	City
11	Address 4	10	State
12	Blank Field		Empty field.
13	User ID	15	
14	Document Type	3	ORD, INV, RTN. Defaults to ORD.
15	Trade Discount Amt.	Number	
16	Freight Amount	Number	
17	Misc Amount	Number	
18	Currency ID	15	
19	Exchange Rate	Number	Defaults using Document Date
20	Default Site ID	10	
21	Requested Ship Date	Date	
22	Shipping Method	15	Defaults if blank

### Header - Version 2.0

Field	Name	Size	Comment
1	Record Type	3	HDR
2	Customer Number	15	
3	SOP Type	3	ORD, INV, RTN, QTE Defaults to ORD.
4	SOP Number	15	
5	Document ID	15	If present, SOP Number above is ignored. Otherwise, defaults based on SOP Type.
6	Document Date	Date	
7	Customer PO Number	20	
8	Comment 1	50	
9	Comment 2	50	
10	Address 1	30	
11	Address 2	30	
12	City	30	
13	State	30	
14	Zip	10	
15	Country	20	
16	Ship to Address Code	15	If present, above address is ignored
17	User ID	15	
18	Trade Discount Amt.	Number	
19	Freight Amount	Number	
20	Misc Amount	Number	
21	Deposit/Amount Received	Number	
22	Currency ID	15	Defaults to functional currency
23	Exchange Rate	Number	Defaults using Document Date
24	User Defined Table 1	20	
25	User Defined Table 2	20	
26	User Defined Table 3	20	
27	User Defined Date 1	Date	
28	User Defined Date 2	Date	
29	User Defined 1	20	
30	User Defined 2	20	
31	User Defined 3	20	
32	User Defined 4	20	
33	User Defined 5	20	
34	Default Site ID	10	
35	Requested Ship Date	Date	
36	Comment ID	15	If present, Comment 1 and Comment 2 are ignored.
37	Shipping Method	15	Defaults if blank
38	Due Date	Date	If not present is calculated by Dynamics GP.
39	Batch Number	15	Defaults from the Import Definition ID.
40	Bill to Address Code	15	
41	Trade Discount Percent	Number	Defaults from Customer Discount.
42	Default Price Level	10	



43	Salesperson ID	15	
44	Sales Territory ID	15	
45	Commission Percent	Number	
46	Commission Amount	Number	
47	Percent of Sale	Number	
48	Commission Sales Amount	Number	
49	Tax Schedule ID	15	
50	Contact Person	30	
51	Ship to Company Name	30	
52	Address 3	30	
53	Payment Terms ID	20	
54	Debtor Comment1	30	Gets copied to Comment1 of the customer master record
55	Email Recipient	80	Gets added to email To Address of the customer email record.
56	Suppress Trade Discount Defaulting	1	1 = True, 0 = False
57	UPS Zone	3	
58	Tax Exempt 1	25	
59	Tax Exempt 1	25	
60	Import To History	1	1 = True, 0 = False
61	Location ANA Code	13	Used by EDI to get customer code from NC_Customer_Location_Ref table
62	NC Location Code	17	Used by EDI to get customer code from NC_Customer_Location_Ref table
63	Country Code	6	

## Addresses

Field	Name	Size	Comment
1	Record Type	3	ADR
2	Customer Number	15	Used in dedicated customer imports only. Otherwise it is ignored.
3	Customer Class ID	15	Customer create only.
4	Customer Name	30	Customer create only.
5	Short Name	15	Customer create only. Defaults to Customer Name if blank.
6	Statement Name	30	Customer create only.
7	User Defined Field 1	20	Customer create only.
8	User Defined Field 2	20	Customer create only.
9	Bill to Address Code	15	Defaults from HDR(40) if blank. Defaults to 'BILLING' in customer create if blank.
10	Bill to Address 1	30	Address create/update only.
11	Bill to Address 2	30	Address create/update only.
12	Bill to Address 3	30	Address create/update only.
13	Bill to City	30	Address create/update only.
14	Bill to State	30	Address create/update only.
15	Bill to Postal Code	10	Address create/update only.
16	Bill to Country	20	Address create/update only.
17	Bill to Phone 1	14	Address create/update only.
18	Bill to Phone 2	14	Address create/update only.
19	Bill to Fax Number	14	Address create/update only.
20	Bill to Contact Name	30	Address create/update only.
21	Ship to Address Code	15	Defaults from HDR(16) if blank. Defaults to 'SHIPPING' in customer create if blank.
22	Ship to Name	30	Defaults from Customer's name if blank.
23	Ship to Address 1	30	Ship to addresses overrides address fields on HDR.
24	Ship to Address 2	30	
25	Ship to Address 3	30	
26	Ship to City	30	
27	Ship to State	30	
28	Ship to Postal Code	10	
29	Ship to Country	20	
30	Ship to Phone 1	14	
31	Ship to Phone 2	14	
32	Ship to Fax Number	14	
33	Ship to Contact Name	30	
34	Salesperson ID	15	
35	Sales Territory ID	15	
36	Ship To UPS Zone	3	
37	Tax Exempt 1	25	
38	Tax Exempt 2	25	
39	Bill To Country Code	6	
40	Ship To Country Code	6	

Address create/update only – These fields are ignored when creating a sales document.

Customer create only – These fields are ignored when not creating new customers.

## Detail

Field	Name	Size	Comment
1	Record Type	3	DTL
2	Item Number	30	
3	Quantity	Number	Document line only.
4	Unit Price	Number	Document line only. Defaults if blank.
5	Item Description	100	Defaults if blank.
6	Unit Markdown Amount	Number	Document line only.
7	Shipping Method	15	Document line only. Defaults to HDR(37) if blank
8	Site ID	10	Defaults from HDR(34) if blank.
9	Unit of Measure	8	Document line only. Defaults if blank.
10	Item Class ID	15	Create/update only.
11	Standard Cost	Number	Create/update only.
12	Current Cost	Number	Create/update only.
13	List Price	Number	Create/update only.
14	Item Short Description	15	Create/update only.
15	Generic Description	10	Create/update only.
16	Price Schedule	10	Create/update only. Defaults from Item Class if blank.
17	Default Price Level	15	Create/update only. Defaults from Item Class if blank.
18	Item User Category 1	10	Create/update only. Defaults from Item Class if blank.
19	Item User Category 2	10	(as above)
20	Item User Category 3	10	(as above)
21	Item User Category 4	10	(as above)
22	Item User Category 5	10	(as above)
23	Item User Category 6	10	(as above)
24	Alternate Item 1	30	Create/update only.
25	Alternate Item 2	30	Create/update only.
26	Template Price List Item	30	Create/update only. Dynamics GP 6+ only.
27	Requested Ship Date	Date	Defaults if blank. Document line only.
28	Fulfilment Date	Date	Defaults if blank. Document line only.
29	Actual Ship Date	Date	Defaults if blank. Document line only.
30	Markdown Percent	Number	Used if Markdown Amount is blank.
31	Drop Ship Flag	Number	0 = Normal; 1 = Drop Ship
32	Unit Cost	Number	Defaults if blank. Drop Ship Only

Document line only – These fields are ignored when creating or updating items.

Create/update only – These fields are ignored when creating item lines on a document.

**Component** – Only needed for kits with no default components.

Field	Name	Size	Comment
1	Record Type	3	COM
2	Item Number	30	
3	Component Item No.	30	
4	Quantity	Number	Actual QTY, not per parent QTY
5	Price	Number	Not supported.

**Nominal** – Used to override account numbers on existing distribution lines.

Field	Name	Size	Comment
1	Record Type	3	NOM
2	Account Number	30	
3	Distribution Type	8	*
4	Distribution Amount	Number	Not used.
5	Item Number	30	if related to a specific item
6	Component Item No.	30	if related to a specific component

\* SALES, RECV, TAKEN, AVAIL, TRADE, FREIGHT, MISC, TAXES, MARK, COMMEXP, COMMPAY, OTHER, COGS, INV, DEPOSITS, CASH, RETURNS, IN USE, IN SERVICE, DAMAGED, UNIT.

**Note:** Only SALES, COGS and INV apply to Item and Component lines.

**Tax**

Field	Name	Size	Comment
1	Record Type	3	TAX
2	Tax Detail ID	15	
3	Taxable Amount	Number	
4	Tax Amount	Number	
5	Item Number	30	If related to a specific DTL line, Item Number of the DTL line.

**Serial/Lot Number**

Field	Name	Size	Comment
1	Record Type	3	SLN
2	Item Number	30	Item Number of the associated DTL line.
3	Component Item Number	30	Component Item Number of the associated COM line.
4	Serial/Lot Number	20	Serial Number or Lot Number, depending on what the item tracks.
5	Lot Quantity	Number	Ignored. Reserved for future expansion.
6	Lot Attribute 1	10	Ignored. Reserved for future expansion.
7	Lot Attribute 2	10	Ignored. Reserved for future expansion.
8	Lot Attribute 3	10	Ignored. Reserved for future expansion.
9	Lot Date 1	Date	Ignored. Reserved for future expansion.
10	Lot Date 2	Date	Ignored. Reserved for future expansion.



### Payments

Field	Name	Size	Comment
1	Record Type	3	PAY
2	Payment Type	4	CASH, CHK or CARD
3	Payment Amount	Number	
4	Chequebook ID or Credit Card Name	15	Chequebook ID for CASH and CHK payments. Card Name for CARD payments.
5	Cheque / Card Number	20	
6	Authorization Code	15	
7	Expiration Date	Date	
8	Payment Doc. Number	15	Currently not supported
9	Cash Account	Acc. Number.	Applies only to Orders
10	Deposits Account	Acc. Number	Applies only to Orders

### Return Quantities

Field	Name	Size	Comment
1	Record Type	3	RTN
2	Item Number	30	
3	QTY On Hand	Number	
4	QTY Returned	Number	
5	QTY In Use	Number	
6	QTY In Service	Number	
7	QTY Damaged	Number	

**Comment** - if present for header, all comment information in the HDR is ignored.

Field	Name	Size	Comment
1	Record Type	3	CMT
2	Item Number	30	If related to a specific item
3	Comment	200	
4	Comment ID	15	If present, Comment is ignored

### Commissions

Field	Name	Size	Comment
1	Record Type	3	CMS
2	Salesperson ID	15	
3	Sales Territory	15	
4	Commission Percent	Number	
5	Commission Amount	Number	
6	Percent of Sales	Number	
7	Commission Sales Amount	Number	

### Tracking Numbers

Field	Name	Size	Comment
1	Record Type	3	TRA
2	Tracking Number	40	Tracking number

## Example Files

### Example 1, using Header version 2.0:

```
HDR,AARONFIT0001,INV,,STDINV,15011999,,,,,,,,,LESSONUSER1,,,,,Z-UK,0.61,,,,,31011999
CMT,,Confirm with accounts before processing,
DTL,ACCS-CRD-12WH,1,5.00
; specify a tax detail id
TAX,UKVAT-PS175N0,5.00,0.88
; specify the main accounts
NOM,100610000,SALES,-5.00,,
NOM,200510000,TAXES,-0.88,,
NOM,200650000,RECV,5.00,,
; make a payment too
PAY,CHK,5.88,FIRST NATIONAL,100623,,,,,
```

### Example 2, using Header version 2.0:

```
HDR,AARONFIT0001,INV,,STDINV,15011999,,,,,,,,,LESSONUSER1
; import a kit item
DTL,HDWR-DCD-0001,1,
; specify INV and COGS accounts for components
NOM,000110000,INV,,HDWR-DCD-0001,ITCT-CIR-CD85
NOM,000210000,COGS,,HDWR-DCD-0001,ITCT-CIR-CD85
NOM,000110000,INV,,HDWR-DCD-0001,RESR-TRR-68KM
NOM,000210000,COGS,,HDWR-DCD-0001,RESR-TRR-68KM
NOM,000110000,INV,,HDWR-DCD-0001,RMTL-CAP-10MF
NOM,000210000,COGS,,HDWR-DCD-0001,RMTL-CAP-10MF
NOM,000110000,INV,,HDWR-DCD-0001,TRAN-STR-N394
NOM,000210000,COGS,,HDWR-DCD-0001,TRAN-STR-N394
; specify the main accounts
NOM,100610000,SALES,,,
NOM,200510000,TAXES,,,
NOM,200650000,RECV,,,
```

## Appendix B: Dynamics GP Menu Entries

As part of the install procedure for Sales Order Import, the following items are added to the Dynamics GP menus:

### Cards, Sales, SOP Import

Import Definitions - Import Definitions Maintenance window

### Enquiry, Sales, SOP Import

Import Audit Enquiry - SOP Import Audit Enquiry window

### Tools, Routines, Sales, SOP Import

Import Processing - Import Processing window

Import Audit Cleardown - SOP Import Audit Cleardown window

### Reports, Sales, SOP Import

Import Audit Report - SOP Import Audit Reports window

## Appendix C: Third Party Integration

It is possible to run an SOP import from code in another third-party application for Microsoft Business Solutions Dynamics GP. The following script has been made available to provide a consistent interface to SOP Import:

```
{
  RunImport of form NC_SOPImport_API

  Runs SOP Import with the given Import Definition ID. If the filename is provided,
  it overrides the import filename from the definition.
  If the import is run successfully, the SOP Number from the documents created are
  returned in a comma separated list. If no documents are created successfully, the
  field will be empty.

  Status values:
    0:   Import was run. Check SOP Numbers for the result.
    1:   Registration Keys incorrect.
    2:   Import Definition does not exist.
}

in      'Import Definition ID'      I_sImportDef;
in      string                      I_sFilename;
inout   text                        IO_txSOPNumber;
out     integer                     O_nStatus;
```

To run this script, the following piece of code could be used:

```
call with name "RunImport of form NC_SOPImport_API" in dictionary 2418,
  ImportDefinitionID,
  Filename,
  SOPNumbers,
  Status;
```

## Appendix D: Multi-Company Imports

It is now possible to import to companies over that the company the import is currently logged into. The CMP record allows the import to switch to another company, this MUST be the first record in an import file and can only appear once. This will switch the import to the specified company for the rest of that import file.

If the CMP record is not specified the import will run as normal (Importing to the company which is currently logged into).

## Appendix E: SQL Interface Tables

The SOP Import module from Nolan Business Solutions provides SQL Interface tables which may be used on SQL installations instead of using the CSV text files.

This appendix provides details of the SQL Interface tables, and how they should be used to import data to Dynamics GP.

Multiple SQL Interface tables are used by the SOP Import module, to represent the different record types utilised by the CSV text file import. The list provided below indicated the relationship between the SQL Interface tables and the record types:

Interface Table	Record Type	Type Id	Content
NCSIM400	HDR	1	Transaction Header
NCSIM400	DTL	2	Line Item Detail
NCSIM401	CMT	8	Comment Text
NCSIM402	COM	4	Line Item Components
NCSIM403	NOM	3	Nominal Accounts
NCSIM404	PAY	6	Payment/Deposit Info
NCSIM405	RTN	7	Returned Qty Breakdown
NCSIM406	TAX	5	Tax Breakdown
NCSIM407	ADR	10	Address Details
NCSIM408	SLN	9	Serial/Lot Number Info
NCSIM409	CMS	11	Commissions Breakdown
NCSIM410	ING	13	Integration Reference
NCSIM411	NOT	12	Record Note Text
NCSIM413	ISA	16	Line Item Shipping Address
NCSIM414	TRA	17	Tracking Number

Each of the SQL Integration tables contains four mandatory columns which form the primary index for the table. These fields are:

- NC\_Reference\_ID
- NC\_Reference\_Sequence
- CMRECNUM
- RCRDTYPE

**NC\_Reference\_ID** should contain a unique (external) reference number for each group of documents to be processed. For example, a CSV interface file could contain three orders – by inserting the corresponding data into the SQL Interface tables with the same NC\_Reference\_ID for each, the three orders are still logically grouped together. You may use a unique NC\_Reference\_ID for every transaction if you wish, but all the records for a single transaction must share the same NC\_Reference\_ID.

**NC\_Reference\_Sequence** is the logical position of the table row within the collection of records sharing a single NC\_Reference\_ID. This is used to mimic the behaviour in the CSV file interface, where the relative position of the records affects how the lines are processed. Each record within a single NC\_Reference\_ID must have a unique NC\_Reference\_Sequence.

**CMRECNUM** is the position of the table row within the current document. When using a distinct reference number (NC\_Reference\_ID) for each transaction, CMRECNUM will match the NC\_Reference\_Sequence.

**RCRDTYPE** indicates the type of data being provided, as per the 'Type Id' values given in the list on the previous page.

For example, to import three simple orders (single item line each), under a single NC\_Reference\_ID, the following values could be used:

NC_Reference_ID	NC_Reference_Sequence	CMRECNUM	RCRDTYPE
EXAMPLE001	1	1	1
EXAMPLE001	2	2	2
EXAMPLE001	3	1	1
EXAMPLE001	4	2	2
EXAMPLE001	5	1	1
EXAMPLE001	6	2	2

Notice how the CMRECNUM counter resets with each new document.

When populating the SQL Interface tables, the NCSIM400 table is the main table which controls the import processing. Whilst multiple interface tables have been provided, to hold the necessary field for each of the different record types, every record must also be represented by a row in the NCSIM400 table. This allows the import process to read through the NCSIM400 table in sequence, and reference additional tables only as required by the indicated record types.

For example, to import a single order with three line items, comments against both the order and the second line item, and a deposit amount, the following table rows should be created:

NCSIM400, Sequence	Record Type	Additional Table
1	1 (HDR)	None
2	8 (CMT)	NCSIM401
3	2 (DTL)	None
4	2 (DTL)	None
5	8 (CMT)	NCSIM401
6	2 (DTL)	None
7	6 (PAY)	NCSIM404

In addition to indicating the record types (and thus the additional tables required), the NCSIM400 table also holds the integration status (NC\_Status column). Status values should be used as follows:

Value	Indicated Status	Comments
1	Building Document	Use a status of 1 whilst inserting records to the SQL Interface tables, to ensure processing does not begin until all records are created.
2	Ready to Import	Update records to a status of 2 when they are ready for processing.
3	Importing	SOP Import will update the status to 3 when it is processing the records.
4	Integration Successful	SOP Import has completed processing these records and they integrated successfully.
5	Integration Failed	SOP Import encountered an error during validation or processing of the document and the transaction was rejected.

## Interface Table Definitions

By default, the SQL Interface tables do not have any bound defaults, and do not allow NULL values. This means that a value must be provided for every column when populating the tables. To simplify the use of the interface tables, you can use the NCsmBindTableDefaults stored procedure to bind Dynamics GP defaults to all the columns in the NCSIM series of tables. This stored procedure is not created automatically, but must be loaded from the NC\_BindDefaults.sql script file (installed to the SQL folder within the Dynamics GP client folder) into each company database using the interface tables. Use the following SQL statements to execute the stored procedure once it has been created:

```
declare @errState int
exec NCsmBindTableDefaults 0, @errState output
```

### **Headers (HDR – 1 – NCSIM400)**

When writing a CSV, the first line of an imported order will be the HDR line. Similarly when doing an import from SQL tables, the first record in the your record sequence should always be the HDR record. The HDR record will be inserted into the NCSIM400 table; please note however, that not all fields within this table are used for the HDR record as the NCSIM400 table stores both HDR and DTL records. The field mappings for the HDR record within the NCSIM400 table are as follows. (Fields marked with \* are required.)

SQL Field Name	Field Description
NC_Reference_ID *	Reference ID
NC_Reference_Sequence *	Reference Sequence
NC_Status *	Status
USERID	User ID
CMRECNUM	Record Number

RCRDTYPE *	Record Type
CUSTNMBR *	Customer Number
SOPTYPE	SOP Type
SOPNUMBE	SOP Number
LNITMSEQ	Line Item Sequence
CMPNTSEQ	Component Sequence
BACHNUMB	Batch Number
DOCID	Document ID
DOCDATE	Document Date
CSTPONBR	Customer PO Number
NCCMMNT1	NC Comment 1
NCCMMNT2	NC Comment 2
ADDRESS1	Address Line 1
ADDRESS2	Address Line 2
CITY	City
STATE	State / County
ZIP	Zip Code / Post Code
COUNTRY	Country
PRSTADCD	Primary Ship to Address Code
PRBTADCD	Primary Bill to Address Code
USER2ENT	User to Enter
TRDISAMT	Trade Discount Amount
FRTAMNT	Freight Amount
MISCAMNT	Misc Amount
DEPRECVD	Deposit Received
CURNCYID	Currency ID
XCHGRATE	Exchange Rate
USRTAB01	User Defined Table 1
USRTAB09	User Defined Table 2
USRTAB03	User Defined Table 3
USRDAT01	User Defined Date 1
USRDAT02	User Defined Date 2
USERDEF1	User Defined 1
USERDEF2	User Defined 2

USRDEF03	User Defined 3
USRDEF04	User Defined 4
USRDEF05	User Defined 5
ReqShipDate	Requested Ship Date
SHIPMTHD	Shipping Method
DUEDATE	Due Date
TRDISPCT	Trade Discount Percent
SLPRSNID	Salesperson ID
SALSTERR	Sales Territory
NC_Commission_Percent_St	Commission Percent
COMMAMNT	Commission Amount
NC_Percent_of_Sale_Strin	Percent of Sale
CMMSLAMT	Commission Sale Amount
TAXSCHID	Tax Schedule ID
CNTCPRSN	Contact Person
NC_Ship_To_Company_Name	NC Ship to Company Name
ADDRESS3	Address 3
PYMTRMID	Payment Terms ID
COMMENT1	Comment1 (Comment 1 on Customer)
Email_Recipient	Email Recipient (To Email address on Cust)
NCSUPPTD	Suppress Trade Discount Defaulting
UPSZONE	UPS Zone
TAXEXMT1	Tax Exempt 1
TAXEXMT2	Tax Exempt 2
NC_Import_Hist	Import To History?
NC_Location_ANA_Code	Location ANA Code – Used by EDI
NC_Location_Code	NC Location Code - Used by EDI
NC_Product_DUN_Code	Product DUN Code – Used by EDI
NC_Product_EAN_Code	Product EAN Code – Used by EDI
NC_Partner_Product_Code	Partner Product Code
VENDORID	Vendor ID
VNDITNUM	Vendor Item Number
CONTLNSEQNBR	Contract Line Sequence Number
XTNDPRCE	Extended Price

CCode	Country Code
Record_Text	Record Text

So, for example, you would insert the following information into the NCSIM400 table to represent your HDR record (we are going to use REF00001 as our reference id)

```

NC_Reference_ID      = 'REF00001'
NC_Reference_Sequence = 1
NC_Status           = 2
RCRDTYPE           = 1 (HDR = 1)
  
```

As well as these fields you must also insert customer number as this is also required for the import. And, obviously, all the header fields you are importing for the order.

**Detail lines (DTL – 2 – NCSIM400)**

SQL Field Name	Field Description
NC_Reference_ID	Reference ID
NC_Reference_Sequence	Reference Sequence
NC_Status	Status
USERID	User ID
CMRECNUM	Record Number
RCRDTYPE	Record Type
ReqShipDate	Requested Ship Date
ITEMNMBR	Item Number
UOFM	U of M
QUANTITY	Quantity
UNITPRCE	Unit Price
ITEMDESC	Item Description
MRKDNAMT	Markdown Amount
NCUSEDPR	NC Use Default Price
LOCNCODE	Location Code
NC_Item_Shipping_Method	Item Shipping Method
CLASSID	Class ID
STNDCOST	Standard Cost



CURRCOST	Current Cost
LISTPRCE	List Price
ITMSHNAM	Item Short Name
ITMGEDSC	Item Generic Description
PriceGroup	Price Group
PRICELVL	Price Level
USCATVLS_1	User Category Values[1]
USCATVLS_2	User Category Values[2]
USCATVLS_3	User Category Values[3]
USCATVLS_4	User Category Values[4]
USCATVLS_5	User Category Values[5]
USCATVLS_6	User Category Values[6]
NC_Template_Price_List_I	Template Price List Item
ACTLSHIP	Actual Ship Date
FUFILDAT	Fulfillment Date
MRKDNPCT	Markdown Percent
DROPSHIP	Drop Ship
UNITCOST	Unit Cost
NC_Empty_QTY	NC Empty Quantity
TAXSCHID	Tax Schedule ID
Record_Text	Record Text

So if we wanted to add a line to our header record we would insert the following key fields into NCSIM400, in addition to all the line fields we wished to import.

NC\_Reference\_ID = 'REF00001'  
 NC\_Reference\_Sequence = 2 (second line of the import)  
 NC\_Status = 2  
 RCRDTYPE = 2 (DTL)

**Comments (CMT – 8 – NCSIM401)**

SQL Field Name	Field Description
NC_Reference_ID	Reference ID
NC_Reference_Sequence	Reference Sequence
CMRECNUM	Record Number
RCRDTYPE	Record Type
ITEMNMBR	Item Number
COMMENT_1 – 4	Comment
COMMNTID	Comment ID
CMMTTEXT	Comment Text

**Components (COM – 4 – NCSIM402)**

SQL Field Name	Field Description
NC_Reference_ID	Reference ID
NC_Reference_Sequence	Reference Sequence
CMRECNUM	Record Number
RCRDTYPE	Record Type
CMPTITNM	Component Item Number
QUANTITY	Quantity
UNITPRCE	Unit Price

**Nominal Info (NOM – 3 – NCSIM403)**

SQL Field Name	Field Description
NC_Reference_ID	Reference ID
NC_Reference_Sequence	Reference Sequence
CMRECNUM	Record Number
RCRDTYPE	Record Type
ACTNUMBR_n	Individual segments of the account number
DISTTYPE	Distribution Type
DISTAMNT	Distribution Amount
ITEMNMBR	Item Number
CMPTITNM	Component Item Number

Nominal lines are used to override account numbers on existing distribution lines, so for example, we could add one against the order we are importing. Because we nominals (as well as all the other record types above 2) are not kept in the NCSIM400 table, we will need to write to both tables, so first we would insert the following key fields into NCSIM403

```
NC_Reference_ID      = 'REF00001'
NC_Reference_Sequence = 3
RCRDTYPE            = 3 (NOM)
```

And then we would need to insert a corresponding line in the NCSIM400 table:

```
NC_Reference_ID      = 'REF00001'
NC_Reference_Sequence = 3 (third line of the import)
NC_Status            = 2
RCRDTYPE            = 3 (NOM)
```

Note that the key fields are the same for both tables; you need the line in NCSIM400 table so that the system knows where to look. The other types follow this same basic principle of writing to both tables.

**Payments (PAY – 6 – NCSIM404)**

SQL Field Name	Field Description
NC_Reference_ID	Reference ID
NC_Reference_Sequence	Reference Sequence
CMRECNUM	Record Number
RCRDTYPE	Record Type
PYMTTYPE	Payment Type
AMNTPAID	Amount Paid
CHEKBKID	Chequebook/Checkbook ID
CHEKNMBR	Cheque/Check Number
AUTHCODE	Authorisation code
EXPNDATE	Expiration Date
DOCNUMBR	Document Number
CASHINDEX	Cash Index
DEPINDEX	Deposits Index

**Return Quantities (RTN – 7 – NCSIM405)**

<b>SQL Field Name</b>	<b>Field Description</b>
NC_Reference_ID	Reference ID
NC_Reference_Sequence	Reference Sequence
CMRECNUM	Record Number
RCRDTYPE	Record Type
ITEMNMBR	Item Number
QTYONHND	Quantity on Hand
QTYRTRND	Quantity Returned
QTYINUSE	Quantity in Use
QTYINSVC	Quantity in Service
QTYDMGED	Quantity Damaged

**Tax (TAX – 5 – NCSIM406)**

<b>SQL Field Name</b>	<b>Field Description</b>
NC_Reference_ID	Reference ID
NC_Reference_Sequence	Reference Sequence
CMRECNUM	Record Number
RCRDTYPE	Record Type
TAXDTLID	Tax Detail ID
TDTXSLS	Total Taxable Sales
TXDTLAMT	Tax Detail Amount
ITEMNMBR	Item Number

**Address Info (ADR – 10 – NCSIM407)**

<b>SQL Field Name</b>	<b>Field Description</b>
NC_Reference_ID	Reference ID
NC_Reference_Sequence	Reference Sequence
CMRECNUM	Record Number
RCRDTYPE	Record Type
CUSTNMBR	Customer Number

CUSTCLAS	Customer Class
CUSTNAME	Customer Name
SHRTNAME	Short Name
STMTNAME	Statement Name
USERDEF1	User Defined 1
USERDEF2	User Defined 2
PRBTADCD	Bill to Address Code
ADDRESS1	Address 1
ADDRESS2	Address 2
ADDRESS3	Address 3
CITY	City
STATE	State
ZIP	Zip
COUNTRY	Country
PHNUMBR1	Phone Number 1
PHNUMBR2	Phone Number 2
FAXNUMBR	Fax Number
CNTCPRSN	Contact Person
PRSTADCD	Ship to Address Code
ShipToName	Ship To Name
NC_Ship_Address_1	Ship Address 1
NC_Ship_Address_2	Ship Address 2
NC_Ship_Address_3	Ship Address 3
NC_Ship_City	Ship City
NC_Ship_State	Ship State
NC_Ship_Zip	Ship Zip
NC_Ship_Country	Ship Country
NC_Ship_Phone_1	Ship Phone 1
NC_Ship_Phone_2	Ship Phone 2
NC_Ship_Fax	Ship Fax
NC_Ship_Contact_Person	Ship Contact Person
SLPRSNID	Salesperson ID
SALSTERR	Sales Territory
NC_Ship_UPS_Zone	Ship UPS Zone



NC_Ship_Tax_Exempt_1	Ship Tax Exempt 1
NC_Ship_Tax_Exempt_2	Ship Tax Exempt 2
CCode	Bill Country Code
NCSHPCCD	Ship Country Code

**Serial/Lot Numbers (SLN – 9 – NCSIM408)**

SQL Field Name	Field Description
NC_Reference_ID	Reference ID
NC_Reference_Sequence	Reference Sequence
CMRECNUM	Record Number
RCRDTYPE	Record Type
ITEMNMBR	Item Number
CMPTITNM	Component Item Number
SERLTNUM	Serial/Lot Number
SERLTQTY	Serial/Lot Qty
LOTATRB1	Lot Attribute 1
LOTATRB2	Lot Attribute 2
LOTATRB3	Lot Attribute 3
LOTATRB4	Lot Attribute 4
LOTATRB5	Lot Attribute 5

**Commissions (CMS – 11 – NCSIM409)**

SQL Field Name	Field Description
NC_Reference_ID	Reference ID
NC_Reference_Sequence	Reference Sequence
CMRECNUM	Record Number
RCRDTYPE	Record Type
SLPRSNID	Salesperson ID
SALSTERR	Sales Territory
NC_Commission_Percent_St	Commission Percent
COMMAMNT	Commission Amount
NC_Percent_of_Sale_Strin	Percent of Sale
CMMSLAMT	Commission Sale Amount

**Integration Reference (ING – 13 – NCSIM410)**

This is a special purpose Interface table used to assist the linking of the integrated SOP documents with the original data in the source system. If the document being processed includes an Integration Reference record, the import process will insert a record in the NCSIM006 table in the DYNAMICS database once the document has been processed (whether integration succeeds or fails). The NCSIM006 table may then be read to determine what happened to data submitted for integration. On success, the NC\_Import\_Key column in NCSIM006 will contain the Dynamics GP SOP Document Number for the document created. On failure, the STRGA255 column will contain the error messages indicating why integration failed.

SQL Field Name	Field Description
NC_Reference_ID	Reference ID
NC_Reference_Sequence	Reference Sequence
CMRECNUM	Record Number
RCRDTYPE	Record Type
NC_Integration_ID	External Integration Reference

**Notes (NOT – 12 – NCSIM411)**

SQL Field Name	Field Description
NC_Reference_ID	Reference ID
NC_Reference_Sequence	Reference Sequence
CMRECNUM	Record Number
RCRDTYPE	Record Type
TXTFIELD	Record Note Text

**Item Shipping Address (ISA – 16 – NCSIM413)**

SQL Field Name	Field Description
NC_Reference_ID	Reference ID
NC_Reference_Sequence	Reference Sequence
CMRECNUM	Record Number
RCRDTYPE	Record Type
ITEMNMBR	Item Number

PRSTADCD	Ship to Address Code
ShipToName	Ship To Name
CNTCPRSN	Contact Person
ADDRESS1	Address1
ADDRESS2	Address2
ADDRESS3	Address3
CITY	City
STATE	State
ZIPCODE	Zip
COUNTRY	Country
PHONE1	Phone1
PHONE2	Phone2
PHONE3	Phone3
FAXNUMBR	Fax Number
CCode	Country Code

**Tracking Numbers (TRA – 17 – NCSIM414)**

SQL Field Name	Field Description
NC_Reference_ID	Reference ID
NC_Reference_Sequence	Reference Sequence
CMRECNUM	Record Number
RCRDTYPE	Record Type
Tracking_Number	Sop Tracking Number

**Integration Reference (VEN – 18 – NCSIM416)**

This is a special purpose Interface table used to define IDS specific fields. At present the preferred vendor ID only is used.

NC_Reference_ID	char(31)	Unchecked
NC_Reference_Sequence	int	Unchecked
CMRECNUM	numeric(19, 5)	Unchecked
RCRDTYPE	smallint	Unchecked

ITEMNMBR	char(31)	Unchecked
VENDORID	char(15)	Unchecked
NCSPBOOL_1	tinyint	Unchecked
NCSPBOOL_2	tinyint	Unchecked
NCSPBOOL_3	tinyint	Unchecked
NCSPBOOL_4	tinyint	Unchecked
NCSPBOOL_5	tinyint	Unchecked
NCSPBOOL_6	tinyint	Unchecked
NCSPBOOL_7	tinyint	Unchecked
NCSPBOOL_8	tinyint	Unchecked
NCSPBOOL_9	tinyint	Unchecked
NCSPBOOL_10	tinyint	Unchecked
NCSPCURR_1	numeric(19, 5)	Unchecked
NCSPCURR_2	numeric(19, 5)	Unchecked
NCSPCURR_3	numeric(19, 5)	Unchecked
NCSPCURR_4	numeric(19, 5)	Unchecked
NCSPCURR_5	numeric(19, 5)	Unchecked
NCSPDATE_1	datetime	Unchecked
NCSPDATE_2	datetime	Unchecked
NCSPDATE_3	datetime	Unchecked
NCSPDATE_4	datetime	Unchecked
NCSPDATE_5	datetime	Unchecked
NCSPDATE_6	datetime	Unchecked
NCSPDATE_7	datetime	Unchecked
NCSPDATE_8	datetime	Unchecked
NCSPDATE_9	datetime	Unchecked
NCSPDATE_10	datetime	Unchecked
NC_SpareInts_1	smallint	Unchecked
NC_SpareInts_2	smallint	Unchecked
NC_SpareInts_3	smallint	Unchecked
NC_SpareInts_4	smallint	Unchecked
NC_SpareInts_5	smallint	Unchecked
NC_SpareInts_6	smallint	Unchecked
NC_SpareInts_7	smallint	Unchecked



NC_SpareInts_8	smallint	Unchecked
NC_SpareInts_9	smallint	Unchecked
NC_SpareInts_10	smallint	Unchecked
NC_SpareStrings_1	char(255)	Unchecked
NC_SpareStrings_2	char(255)	Unchecked
NC_SpareStrings_3	char(255)	Unchecked
NC_SpareStrings_4	char(255)	Unchecked
NC_SpareStrings_5	char(255)	Unchecked

### Field Type Definitions

The following fields are imported as strings within normal (csv) SOP Import but are stored as numeric values within the actual SQL tables; mappings between the two values for the needed fields are provided here.

#### SOP Type

SOP Import value	SQL value
QTE	1
ORD	2
INV	3
RTN	4

#### Payment Type (PAY)

SOP Import value	SQL value
CASH	1
CHK	2
CARD	3

#### Distribution Type (NOM records)

SOP Import value	SQL value
SALES	1
RECV	2
CASH	3
TAKEN	4
AVAIL	5
TRADE	6
FRIEGHT	7
MISC	8
TAXES	9
MARK	10
COMMEXP	11

SOP Import value	SQL value
COMMPAY	12
OTHER	13
COGS	14
INV	15
RETURNS	16
IN USE	17
IN SERVICE	18
DAMAGED	19
UNIT	20
DEPOSITS	21



## Appendix F: Document Statistics

Document Owner: **Peter Boniface**  
File Location: **Sales Order Processing Import.docx**  
Current Version Date: **20 May 2010**

### Revision Summary:

Date	Author of Revision	Summary
May 2010	Peter Boniface	Updates for Dynamics GP 2010

## Contact us

We welcome comments regarding the usefulness of the Nolan Business Solutions documentation. If you have specific suggestions or find any errors in this manual, send your comments by e-mail to the following address: [info@nolanbusinesssolutions.com](mailto:info@nolanbusinesssolutions.com).

Nolan Business Solutions provide sales and support services in the following locations:

### Europe, Middle East and Africa

Vernon Yard  
96,Clarence Road  
Fleet,  
Hampshire,  
GU51 3XU  
UK

Tel : +44 (0) 1252 811663  
Support : +44 (0) 1252 627990

Email (General) [info@nolancomputers.com](mailto:info@nolancomputers.com)  
Email (Sales) [sales@nolancomputers.com](mailto:sales@nolancomputers.com)

Email (Product Support)  
[support@nolancomputers.com](mailto:support@nolancomputers.com)

### Asia and Pacific

29/12 Phillip Mall  
Kendall Street  
West Pymble  
NSW 2073  
Australia

Tel : +61 (0) 4 0130-7638

Email (General) [auinfo@nolancomputers.com](mailto:auinfo@nolancomputers.com)  
Email (Sales) [ausales@nolancomputers.com](mailto:ausales@nolancomputers.com)

Email (Product Support)  
[ausupport@nolancomputers.com](mailto:ausupport@nolancomputers.com)

### North and South America

1408 Horizon Avenue  
Suite 201  
Lafayette  
CO 80026

Tel : +1 303 6659343  
Support : +1 888 355 1049

Email (General) [usinfo@nolancomputers.com](mailto:usinfo@nolancomputers.com)  
Email (Sales) [ussales@nolancomputers.com](mailto:ussales@nolancomputers.com)

Email (Product Support)  
[ussupport@nolancomputers.com](mailto:ussupport@nolancomputers.com)